

Flow straight to the point!



**x-flow™**

The universal flowable

**DENTSPLY**  
DETRAY



# When you think flowable composites:

---

## Think a new dimension in performance!

**F**lowable composites were originally developed for small cavities and as “adaption promoters” for packable composite materials. Flowable composites should ensure the wetting of the cervical and pulpal walls of the proximal box.

Within a very short period of time flowables have become extremely popular.

**X-flow™** provides precise application, easy control and can be combined with all light-cured composites, compomers and ormocers.

**X-flow™** is therefore the logical choice when a flowable composite is required for demanding reconstruction procedures.



**x-flow™**

The universal flowable

- Precise, targeted application
- Easy control
- Compatibility with all light-cured composites



# When you think flowable composites:

## Think precise application!

In the past, flowable composites were always difficult to apply. **X-flow™**'s has a unique metal canula, which allows the composite to be easily delivered to

the exact point where it is required. Even areas that have been difficult to reach are now accessible, thanks to **x-flow™**'s unique delivery system.



### Think simplicity:

Just insert the compula\* into the applicator gun and enter a new era of flow composites: The **x-flow™** era.

\* The compula is a combination of Compules® Tip and steel-canula, for exact delivery and application.



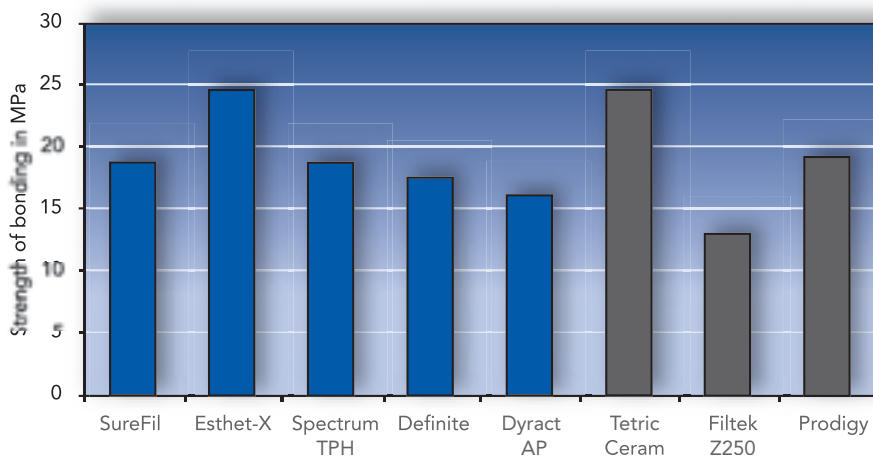
# When you think flowable composites:

## Think infinite combinations!

**X-flow™** provides an end to the confusion of mixing and matching different brands of flowables and composites. Laboratory studies have shown that **x-flow™** is compatible with all light-cured com-

posites available today. **X-flow™** provides a strong bond to all light-cured composites, compomers and ormocers, making it an easy choice, when combinations are necessary.

### High instant-bonding-rate of x-flow™ to known brands of lightcured filling-materials\*



\*DENTSPLY DeTrey Konstanz. Internal research report

### The result:

**X-flow™** is flowable and compatible making it an easy and convenient choice for combination with different light-cured composites, compomers and ormocers.

### Your benefit:

**X-flow™** shows strong bonds to all common light-cured restorative materials available on the market.



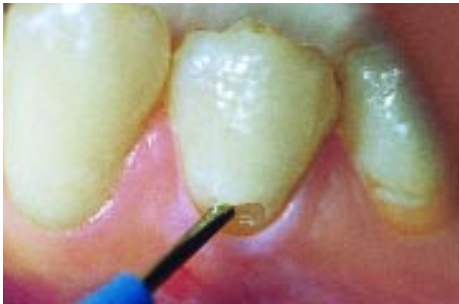
# When you think flowable composites:

## Think controlled application!

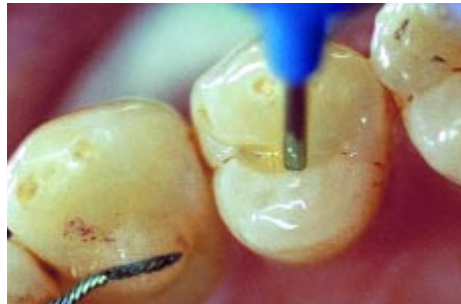
**X-flow™** is easy to control. It is firm without being stiff and flows without running away. It offers the perfect viscosity. **X-flow™** manages to combine

these subtle contradictions in one unique product. It gives you, the clinician, a controllable flow composite. **X-flow™** ensures optimal handling when lining the

pulpal and gingival walls of the proximal box (class II). **X-flow™**'s unique controllable flow properties allow optimal treatment in all clinical indications.



*Cervical restoration (Class V)*



*Extended fissure sealing*



*Minimal invasive restoration*



*Cavity lining*



*Repair of direct and indirect restorations*

### The result:

**X-flow™** flows nicely when applied, which is especially beneficial for class V restorations.

# Copy and fax order form

(to be returned to your dental dealer)

Yes, please send me x-flow™.

Content: 16 compulas

- 60608102 Refill A2
- 60608103 Refill A3
- 60608104 Refill A4
- 60608105 Refill B1
- 60608106 Refill C2
- 60608110 Refill TL
- 60608111 Refill O-A3



Name, first name

Street, no.

Post code,

town or city

My dental dealer

Stamp/signature

K 791.00.574/2

DENTSPLY DeTrey GmbH  
De-Trey-Str. 1  
78467 Konstanz  
www.dentsply.de

**DENTSPLY**  
DeTrey