



**Q U I X F I L <sup>TM</sup>**

**SPEED. DURABILITY. PLEASURE.**

**THE „WHOLE-IN-ONE“ POSTERIOR RESTORATIVE**



# QUIX

## WITHOUT HANDICAP: QUIXFIL™

### CAN YOU FULFIL YOUR PATIENT'S EXPECTATIONS?

Patients nowadays expect more than a simple restoration, even for posterior fillings. They tend to look for durable tooth-coloured fillings – but at a reasonable price. However, up to now, doing an economical posterior restoration has meant compromising between economy and performance.

	Speed	Durability	Economy	Tooth Colour
Amalgam	😊	😊	😊	😞
Glass Ionomer	😊	😞	😊	😊
Composite	😞	😊	😞	😊
QuiXfil™	😊	😊	😊	😊

Table: Patient's expectations

# STRAIGHT TO THE GOAL



**Q** **F I L**™

## A VISION FOR TODAY

### PERFORMANCE AND ECONOMY

DENTSPLY has developed an ideal posterior material to fulfil your needs:

- **Speed:** QuiXfil™ provides a fast and economical treatment step, 4 mm cure in 10 seconds.
- **Durable:** QuiXfil™ shows reduced shrinkage.
- **Tooth-coloured:** QuiXfil™ is available in one shade that demonstrates a chameleon effect.
- **A pleasure to use:** QuiXfil™ is non-sticky and easily sculptable, with a long working time and easy-delivery.

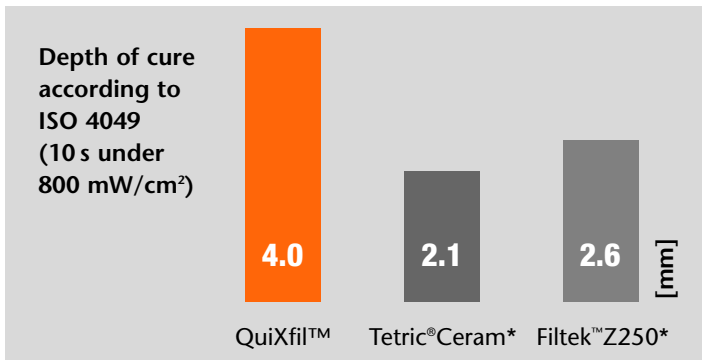
The result is QuiXfil™, the economical posterior material.

QuiXfil™: Without compromise.

# FASTER AND EASIER QUIXFIL™



- Freedom to cure 4 mm in 10 seconds.  
(Under 800mW/cm<sup>2</sup>)
- One universal shade
- Fast application with Xeno®III



- QuiXfil™ allows curing of 4 mm increments in 10 seconds under 800 mW/cm<sup>2</sup>. Unlike common composites, the second or third layering step becomes obsolete: Even deep restorations are achieved with one shot.

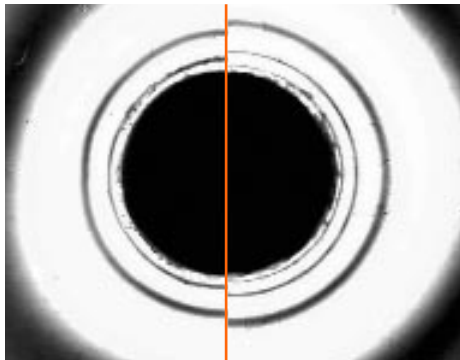
In combination with the self-etching adhesive, Xeno®III, from DENTSPLY, the application process gets even easier.

## Step by step application

1. Dispense equal amounts of liquids A and B into a clean mixing well.
2. Mix for approx. 5 sec.
3. Apply generous amounts onto cavity surfaces. Leave for at least 20 sec.
4. Uniformly spread adhesive by a gentle stream of air pressure until there is no more flow for a minimum of 2 sec.
5. Cure for at least 10 sec.
6. Place increments by 4 mm each.
7. Light-cure each increment for 10 sec.
8. Polishing can be done immediately.



A tooth-coloured restoration that lasts.

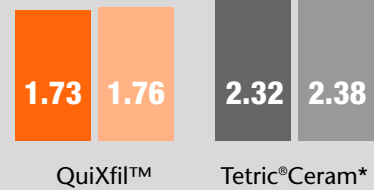


3.9 MPa  
QuiXfil™

4.4 MPa  
Tetric®Ceram\*

**Shrinkage Stress**  
by C.P. Ernst, University of Mainz

### Volume Shrinkage Manchester



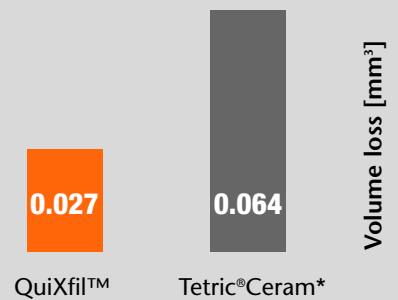
**QuiXfil™ maintains marginal integrity, with Low Shrinkage Stress.**

- QuiXfil™, when cured, shrinks 33% less when compared to similar restorative materials.

**QuiXfil™ lasts, thanks to its wear rate.**

- The high volume of filler particles is responsible for the low shrinkage.
- Independent wear rate data from ACTA and M. Latta has confirmed that QuiXfil™ is suitable for posterior restorations.

### Mark Latta (Wear Leinfelder)



\* Tetric® Ceram\* is a trademark of Ivoclar/Vivadent AG.  
Filtek™ is a trademark of 3M Espe AG.

# PLEASURE WITH QUIXFIL™

*Take pleasure in posterior restorations again!*



## **The consistency of QuiXfil™ guarantees optimal handling:**

- QuiXfil™ adapts easily to the cavity without sticking to your instruments
- QuiXfil™ is easy to sculpt
- QuiXfil™ stays where you place it
- QuiXfil™ is easily extruded from a compule

So, take your time, relax and enjoy doing posterior restorations again.

## **QuiXfil™ offers:**

- **Twelve percent more material per compule for economical restorations**
- A prolonged working time of 100 seconds

## **The clinical safety of QuiXfil™ is proven by independent researches:**

**Claus-Peter Ernst:** University of Mainz (Shrinkage Stress)

**Marc Braem:** University of Antwerpen (Fatigue)

**Jürgen Manhart:** University of Munich (Microleakage Class II)

**Uwe Soltesz:** University of Freiburg (Shrinkage)

**Jaques Dejou/Jean-Pierre Salomon:**

University of Marseilles (Polishability)

**Mark Latta:** (Wear Leinfelder)

**Reinhard Hickel/Jürgen Manhart:** University of Munich

(Clinical Investigations Class I&II)

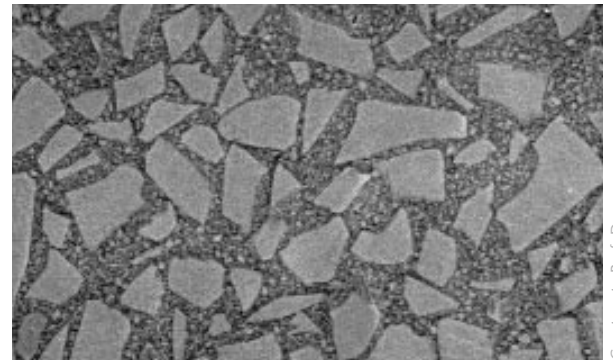
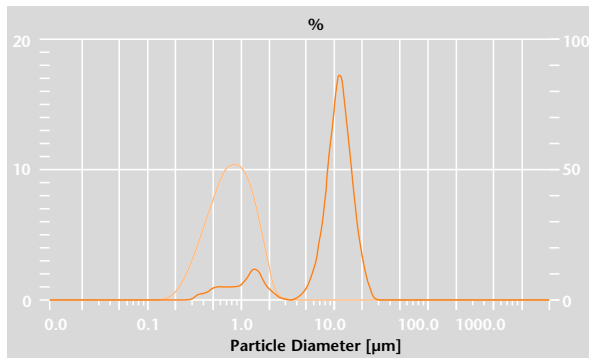
**Cheung, Lo:** University of Hong Kong

(Clinical Investigations Class I&II)

# THE PERFECT BALANCE INNOVATION AND CONTROL



*Durability, speed, and being a pleasure to use were the main considerations when designing the new QuiXfil™. Utilising three groundbreaking advances in technology, QuiXfil™ offers the perfect balance for an economical posterior restoration.*



Courtesy to Prof. Degrange

## **PFC – Precise Filler Control Technology**

QuiXfil™ contains filler particles of two different sizes that, in combination, lead to excellent material stability. This can be compared to the perfect mixture of sand and pebbles that guarantees the strength and stability of concrete.

Maximum control of filler size is achieved with the new Precise Filler Control (PFC) system. The PFC system ensures that the size distribution of fillers is controlled to guarantee:

- The highest possible filler loading (66% by volume and 86% by weight)
- A consistency that can easily be extruded from a compule

## **Bi-modal Interstitial Technology (BIT)**

Researchers have further optimised the filling distribution through the creation of Bi-modal Interstitial Technology (BIT). BIT solves two of the major problems in posterior restoration materials by ensuring:

- Low material shrinkage of 1.7%
- Ideal paste handling properties for posterior restorations

## **Dynamic Curing Control (DCC) System**

The use of the DCC system allows QuiXfil™ to achieve the perfect balance of:

- A maximum depth of cure in 10 seconds
- A prolonged working time under surgical lighting to 100 seconds

# PERFORMANCE AND ECONOMY



Get 12% more for each compule!

## Packaging Information

Yes, I would like to order

- |  | ReOrder No        |
|--|-------------------|
| <input type="checkbox"/> <b>QuiXfil™ Starter Kit</b><br>40 Compules®Tips (à 0.28 g = 11.2g), Universal Shade,<br>1 Compules®Gun, 50 Applicator Tips, Dappen Dish | <b>606.05.600</b> |
| <input type="checkbox"/> <b>QuiXfil™ Refill Package</b><br>20 Compules®Tips (à 0.28 g = 5.6g), Universal Shade   | <b>606.05.606</b> |
| <input type="checkbox"/> <b>QuiXfil™ Bulk Package</b><br>100 Compules®Tips (à 0.28 g), Universal Shade   | <b>606.05.670</b> |
| <input type="checkbox"/> <b>Xeno®III Standard Package</b><br>2 Bottles A+B (5 ml each), 50 Applicator Tips,<br>1 Dappen Dish                                     | <b>606.67.290</b> |
| <input type="checkbox"/> <b>Palodent® Complete Kit</b>   | <b>659060Y</b>    |
| <input type="checkbox"/> <b>Automatrix™ Introductory Package</b>   | <b>624.22.501</b> |
| <input type="checkbox"/> <b>Enhance™ Finishing Points Refill</b><br>Box of 30  | <b>624065X</b>    |

Dentist stamp

Date/Signature

**DENTSPLY Limited**  
Hamm Moor Lane  
Addlestone, Weybridge  
Surrey KT15 2SE  
Phone (0 19 32) 85 34 22

**DENTSPLY DeTrey GmbH**  
De-Trey-Str. 1  
78467 Konstanz  
Tel. 07531-583-0  
www.dentsply.de