

Technique Tips

To effectively use a contoured sectional matrix, there must be enough interproximal space to position the matrix without force or distortion. The BiTine® Ring, when placed prior to cavity preparation, creates the necessary separation with no additional chair time. (Hint: It also provides a convenient finger rest.)



The BiTine Ring clasps the free ends of the matrix to the tooth. The broad tines are designed to engage the tooth at its greatest girth (left) preventing the matrix from flaring at the occlusal.

The BiTine II Oval Ring works well in tandem with the Original BiTine Round Ring for MODs (right).



TECHNIQUE QUESTIONS

Is a rubber dam necessary?

To ensure an ideal environment for restorative adhesion, rubber dam placement is recommended.

How thin are the Palodent matrices?

The Palodent Standard and Plus Matrices measure .002" and the Mini Matrix is .015", however both matrices are thinner at the contact point. The thickness of each matrix is carefully designed to ensure that it maintains its shape and contour without wrinkling or distorting. The unique spring action of the BiTine Rings provides the space needed to place these contoured matrices.

Is there a proper way to place the matrices?

The dot or notch on the Standard and Mini Matrices should be placed toward the occlusal. The longer flap on the Palodent Plus Matrix should be placed apically.

How do I sterilize the Palodent System?

The BiTine Round Rings and BiTine II Oval Rings are best autoclaved. As with all steel instruments, enzymatic solutions will reduce the shinny finish on the BiTine rings. The Matrices are single use and should be discarded with other contaminated sharps.

Can the Palodent Matrix just be wedged?

Yes, if the cavity is small you may not need to replace the BiTine Ring in the procedure. Remember, proper separation is achieved by the placement of the BiTine Ring **before** preparation.

What instrument is used to spread the BiTine Rings for placement?

A rubber dam clamp or forceps.

The Palodent® Difference

For perfect contacts, nothing is as quick and easy as DENTSPLY Caulk's Palodent System. The Palodent System is the original, most trusted and highest rated contoured sectional matrix system available.

The shape of each Palodent Matrix creates natural contours and profiles, instead of the flat surfaces and improper contacts achieved by other matrices.

Palodent Matrices can be used with any restorative material, including composites, amalgams, wax patterns, or temporaries.

Palodent Matrices are malleable and can be adapted to any residual tooth surface.

Embrasures can be controlled without having to disk or polish in those difficult areas near the contact.

The Palodent Technique assures perfect contacts and natural contours without needless sacrifice of healthy tissue. This 30-second technique saves you time in burnishing, final finishing and forced wedging while minimizing post-op sensitivity and damage to the gingival tissue.



A Legacy Continued

DENTSPLY is pleased to continue the legacy of quality and performance started by Palodent's inventor, Dr. Alvin "Bud" Meyer.

Early in Dr. Meyer's professional career he invented the Palodent Sectional Matrix and developed what the industry has come to know as the BiTine® Ring. The restorative techniques pioneered by Dr. Meyer, provide dentists with a means to achieve predictable contacts. Dr. Meyer maintained a private practice for over 30 years, was a former instructor at the University of California, San Francisco, and was a published author.

DENTSPLY
DeTrey

Dentsply DeTrey GmbH
De-Trey-Str. 1
D-78467 Konstanz
Tel.(0 75 31) 5 83-0
www.dentsply.de

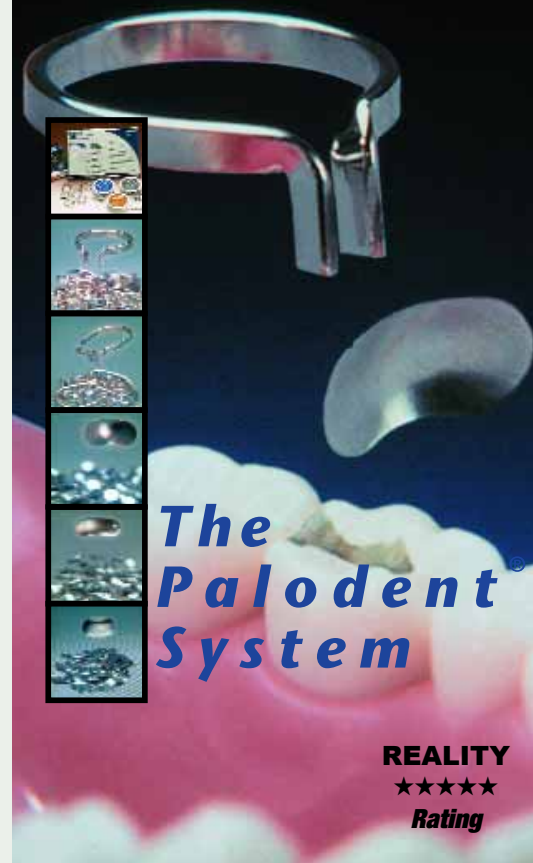
The
Palodent®
System

U.S. Patent Nos.: 5,730,592; 5,788,487
and other patents pending

the original
contoured sectional

matrix for
superior contacts &
maximum **control**

DENTSPLY
DeTrey



The
Palodent®
System

REALITY
★★★★★
Rating

The Palodent® System

The Palodent® System ... *CONTOUR, CONTROL AND PATIENT COMFORT*

NOTE: We recommend that a rubber dam be in place prior to the procedure.



The adjustable spring action of the BiTine® Ring creates a gentle separation while the cavity is being prepared.

SEPARATE & PREPARE

Once the tooth is prepared, remove the BiTine Ring. Finger roll the matrix to the approximate tooth circumference.



Place the matrix and gently close the gingival margin with an anatomical wedge.

STABILISE

To further stabilise the matrix, a BiTine Ring is placed with the tines in the proximal plane.



Slightly burnish the matrix to protect the margins and generate proper anatomy. Over-burnishing can distort the contour.

READY TO RESTORE

PALODENT MATRIX KITS



DENTSPLY Caulk's Palodent Kits are designed to provide everything you need to achieve excellent interproximal contacts. The kits offer a selection of BiTine Rings and

Sectional Matrices with clear directions to get you started.

Complete Kit 659060Y

200 matrices (3 sizes - 100 standard, 50 mini, 50 plus), 4 Round BiTine Rings, 2 Oval BiTine II Rings

Intro Kit 659070Y

50 Standard matrices, 2 Round BiTine Rings

ORIGINAL BITINE ROUND RING



Excellent contacts start with proper separation. The spring action of the original BiTine Round Ring gently separates teeth to provide the space needed to get proper contours. This gentle, orthodontic separation eliminates the need for forced wedging that can create

patient sensitivity and gingival trauma. The tension may be adjusted to fit your judgement and are easily stacked for MODs or quadrant dentistry.

BiTine Round Ring refill 659040Y

Contains 4 Original Round BiTine Rings

For use with all Palodent Matrices

BITINE II OVAL RING



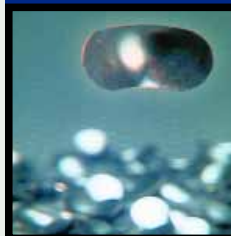
The BiTine II Oval Ring provides gentle separation and matrix stabilization. The longer loop provides more visibility and the longer tines assist in stacking rings for MODs. The patented design provides two sockets to engage the rubber dam forceps for ease in application.

BiTine II Oval Ring refill 659050Y

Contains 2 BiTine II Oval Rings

For use with all Palodent Matrices and in conjunction with the Original BiTine Round Ring.

PALODENT STANDARD MATRIX



The Standard sized contoured sectional matrix is ideal for most posterior restorations. The easily identified notched-side of the Standard Matrix is placed towards the occlusal. The Standard Palodent Matrix provides superior proximal contacts and natural contours.

100 Standard Matrices refill 659010Y

50 Standard Matrices refill 659015Y

PALODENT MINI MATRICES

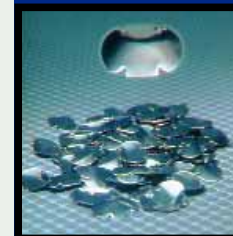


This smaller contoured sectional matrix is ideal for deciduous restorations and for narrow and shallow preparations with proximal boxes. This "Mini" Matrix is 20% more narrow than the original Palodent Standard Matrix. An easily identified dot

on the matrix is placed towards the occlusal for best results.

50 Mini Matrices refill 659020Y

PALODENT PLUS MATRIX



This larger contoured sectional matrix is designed for preparations with deep proximal boxes. The patented Palodent Plus Matrix has two gate panels that provide a natural indentation at the cervical line, exact control of the marginal ridge and occlusal

embrasure. The longer gate or flap is designed to be placed apically.

50 Plus Matrices refill 659030Y